

Cyber Asset Attack Surface Management (CAASM) with JupiterOne

A unified view of all cyber assets, across cloud, on-premises, and hybrid environments. Map and visualize asset relationships to see vulnerabilities and their impact. Stay informed with near real-time alerts on vulnerability exposures, misconfigurations and security device hygiene. Simplify compliance through continuous control testing.

Benefits



Continuous Discovery

Keep pace with the speed of digital transformation and stop manually tracking asset inventory.



Complete Visibility

Full visibility and context into devices, users, networks, applications, and data.



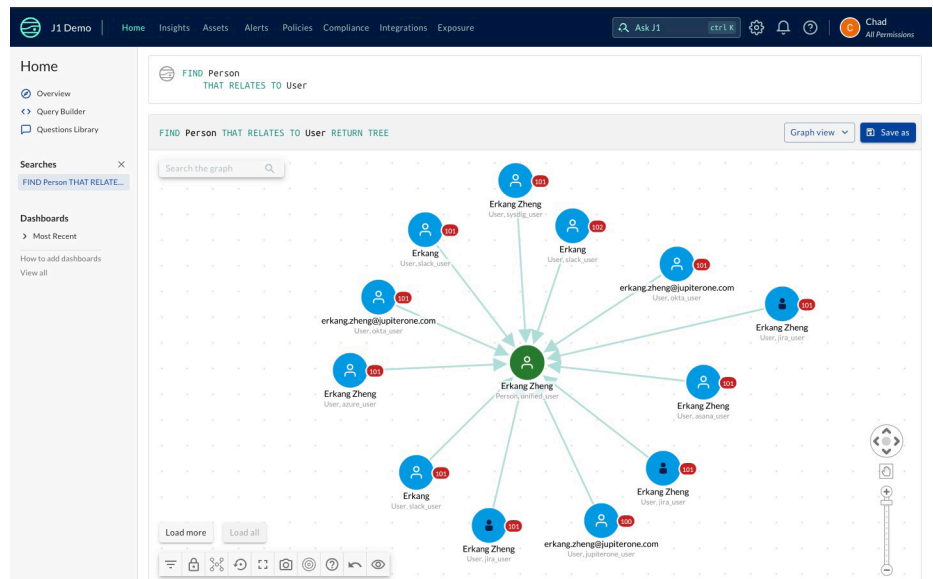
Prioritize Actions

Prioritize remediation by analyzing asset data and relationships, aligned with business risk.



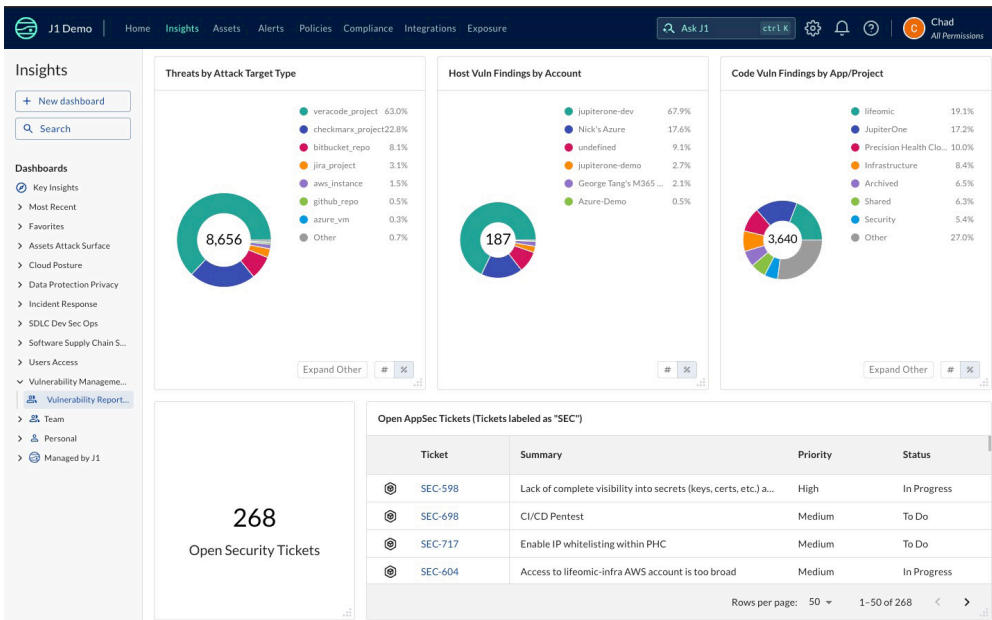
Get Answers

Quickly analyze your assets, identify security gaps and get detailed answers to any questions about your environment.



As cloud and SaaS adoption grow, IT and security teams are shifting from support roles to strategic ones that scale and secure businesses. Essential to this shift is continuous visibility into an expanding IT infrastructure, starting with an accurate inventory of devices, applications, and users. Gartner research indicates that only 17% of organizations can effectively identify most of their assets, which are often siloed, complicating management and

action. Security teams are turning to JupiterOne, a leading cyber asset attack surface management (CAASM) solution, to overcome these challenges. JupiterOne consolidates all cyber assets, from infrastructure to personnel, in one accessible location, embedding business context to help prioritize critical elements. It uses a data graph model for clear asset ownership, enabling automated, targeted remediation actions by security analysts.



Actionable Insights

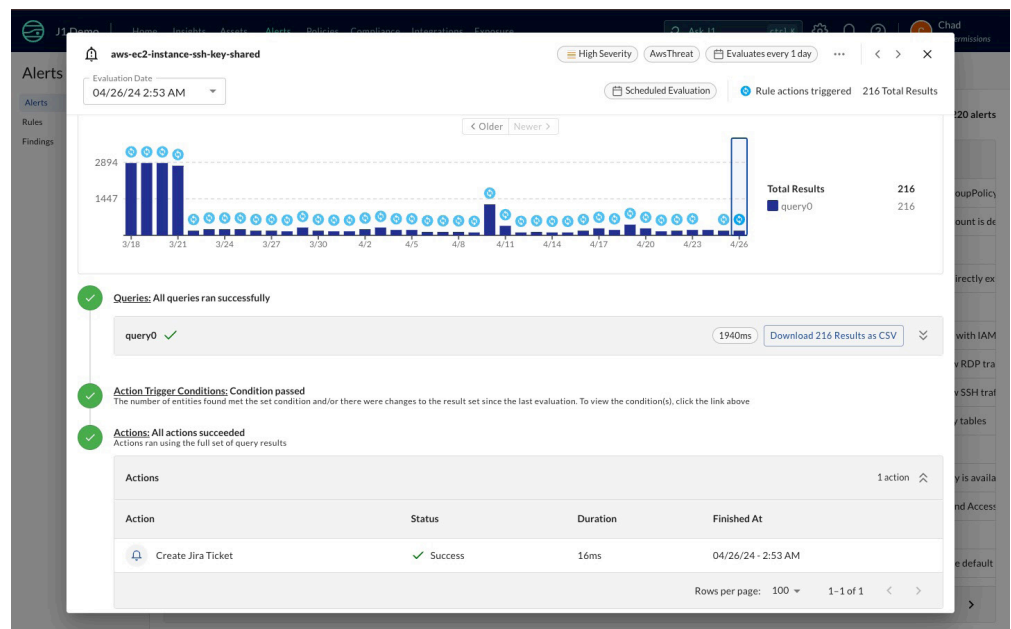
JupiterOne's Insights dashboards enable you to visualize your data in a variety of meaningful ways. JupiterOne offers a comprehensive set of managed dashboards that provide immediate value.

With the ability to customize and curate your own dashboards and widgets, you are able to parse your data and visualize it as you see fit.

Automate Workflows

JupiterOne supports the ability to turn any J1QL query into an alert, which allows you to proactively monitor questions of interest without the need to manually perform those queries to find changes.

With an alert rule, JupiterOne will automate the monitoring process for a particular question and allows you to send that information into a variety of workflows such as alerting or ticketing, or remediation flows.



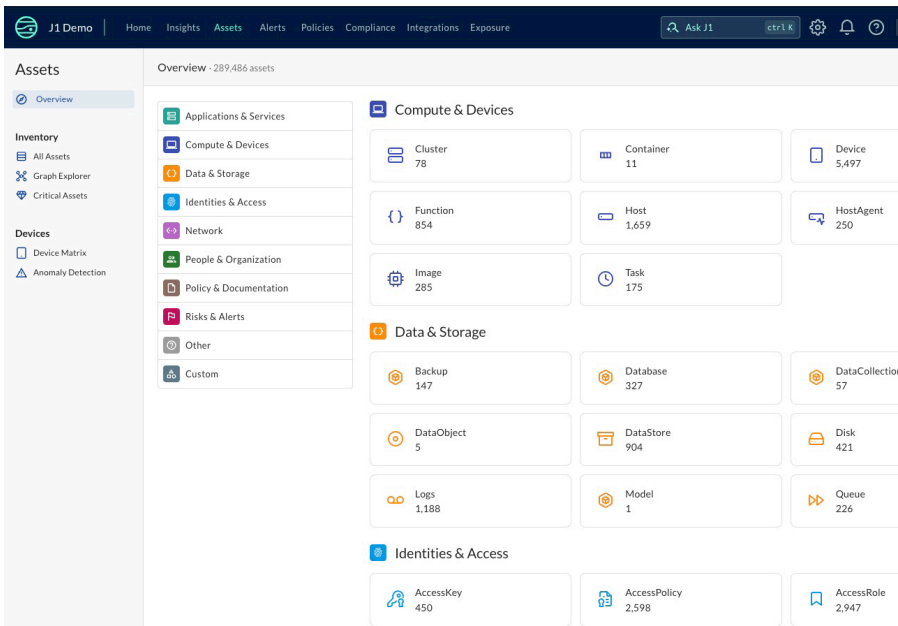
CAASM Use Cases with JupiterOne

Attack Surface Management: Asset identification, normalization and deduplication

Exposure Management: Risk based prioritization, discovery of vulnerable asset combinations

Continuous Compliance: Automated evidence collection, compliance and auditing dashboards

Posture Management: Configuration monitoring, policy-as-code, violation and drift detection



Visibility Across All Asset Classes

JupiterOne's extensive data model offers unparalleled insights into your digital infrastructure. By transforming your cyber asset inventory into an interactive visual map, we provide a comprehensive view of your threat landscape and relationship mapping across all of your asset types. This enables clear identification of vulnerabilities, prioritization of remediation efforts, and significant reduction of your internal attack surface, ensuring robust security posture management.

100 Asset Classes

5,000 Unique Asset Types

20,000 Unique Relationship Types



Initially, JupiterOne was just our asset management platform. But, there's so much more to it. Any time you have data in the platform, JupiterOne is constantly and automatically connecting it to other data. That's where the power comes in. We've been able to offload a lot of our work because of it."

Becki True

Manager, Security Engineering at Okta CIC

How It Works

1. Connect your infrastructure and security tooling to JupiterOne via API.
2. Immediately gain visibility into your entire cyber asset inventory.
3. Understand security and compliance posture and begin risk-based prioritization.
4. Take action on prioritized vulnerabilities, gaps, and misconfigurations.

Integrations

With over 200 integrations, you can identify, map, and analyze your entire digital infrastructure, including:

- Cloud service providers
- SaaS applications
- Code repos
- Identity providers
- Application vulnerability scanners
- Infrastructure vulnerability scanners
- Endpoint security agents
- User training
- And more

Cyber Asset Visibility & Management

Cloud adoption, digital transformation, and API-first architecture have fundamentally changed how you build, manage, and secure your enterprise. JupiterOne enables your security teams to create a centralized view of your entire cyber asset ecosystem, and prioritize risk across your hybrid and multi-cloud environments.

Discover Assets

API driven, agent-less collection of all assets across your tech stack. Consolidate asset data from IT, DevOps, Security, HR, and other tools into a single source of truth.

Complete Asset Inventory

Build a holistic picture of all your assets that extends beyond traditional definition of assets, such as, devices and hosts servers to include code repositories, user policies and findings.

Automate Workflows

Reduce manual investigation processes by creating continuous and automatic alert rules with integration into notification, ticketing and remediation systems.

Asset Normalization

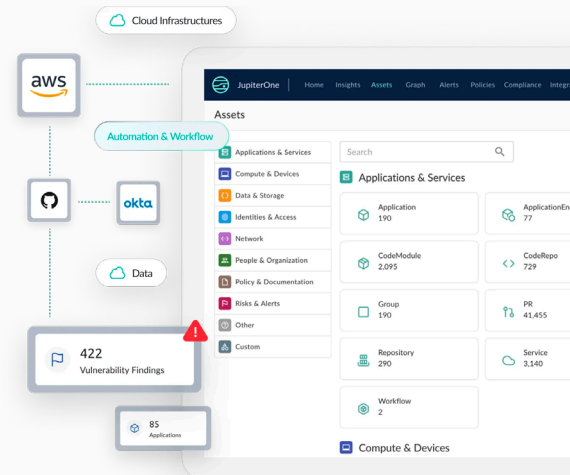
Ensures that data from all sources is standardized and consistent to eliminate duplications and inconsistencies for greater data accuracy and reliability.

Query Assets

Get detailed answers to assets, vulnerabilities, critical issues and compliance questions. Choose from a library of pre-built queries or create your own to meet specific use cases.

Instant Insights

Out-of-the-box and customizable dashboards to analyze assets and relationships from across your entire system in a single unified view.



About JupiterOne

JupiterOne is the asset, attack surface and exposure management platform for security and IT, that empowers organizations to prioritize and remediate what matters most. Customers use the JupiterOne platform to perform cyber asset inventory, manage their attack surface, respond to incidents, hunt for the latest exploits and continuously monitor their exposure with complete visibility across assets and relationships.

Streamline asset visibility and management

Schedule a demo today to learn how to secure your enterprise with cyber asset analysis, only from JupiterOne.

[JupiterOne.com/get-a-demo](https://jupiterone.com/get-a-demo)

200+ INTEGRATIONS INCLUDING



© 2024 JupiterOne. All Rights Reserved.